

August 28, 2020

LCS Newsletter

Our Mission: "To share the Good News of Jesus Christ, teach children, and assist parents in training children to be witnessing Christians and productive citizens."

Weekly Reflection

Level Ground

Psalm 26:11-12 - But as for me, I shall walk in my integrity; redeem me, and be gracious to me. My foot stands on level ground; in the great assembly I will bless the LORD.

At the time of this writing, churches are beginning to open after being closed because of the COVID-19 pandemic. Assemblies, great and small, are permitted once again to gather as brothers and sisters in Christ to bless the Lord who redeemed them. Still, in worship or apart from it, many people may feel that they are not really standing on level ground. Everything seems to be shifting underfoot, from society-wide issues of global pandemic fears and political conflicts to trouble that strikes closer to home—loss of home and employment, family strife or the illness of loved ones. We may make every personal effort to walk in integrity, as the Lord wants us to do, but we cannot find that level ground. With the psalmist we plead, "Redeem me, and be gracious to me!"

Only one man has truly walked with integrity, the God-Man Jesus Christ. "He committed no sin, neither was deceit found in His mouth. When He was reviled, He did not revile in return; when He suffered, He did not threaten, but continued entrusting Himself to Him who judges justly" (1 Peter 2:22-23). The ground was not always level beneath our Lord's feet as He faced hatred, rejection, and unbelief. On the night He was betrayed, Jesus pleaded with His Father for redemption and grace, asking that the terrible cup of suffering and death, the cup of God's wrath against sin, might be removed from Him.

Yet Jesus also asked that His Father's will would be done, and so it was. The ground shifted beneath the Savior's feet as He was betrayed and arrested, tried and unjustly condemned to death. There was likely very little level ground at Golgotha where Jesus was nailed to the cross. Although He had walked through His entire life in innocence and integrity, Jesus bore our sins in His body on the cross. He was punished for our lack of integrity, our hatred and selfishness, pride and jealousy—every sin of thought, word, and action. In our place, He drained the cup of God's wrath against sin.

Taken down from the cross, Jesus' body was laid in the tomb. On the third day, the first Easter morning, the ground shifted as never before. Jesus was raised bodily from death and His victory over death is our victory. The redemption for which we pray was accomplished. By God's grace, through faith in Jesus Christ, our sins are forgiven, the burden of guilt lifted. Because Jesus lives, we too have new life in His Name. United with Him in Baptism, we have been buried with Him and raised to walk—*with integrity!*—in newness of life.

At the foot of the cross, we find the level ground we seek, level ground that can be found nowhere else. We may not always be able to assemble with our fellow believers to worship, but one day we will stand before God's throne in the great assembly of all the redeemed to bless the Lord who saved us!

THE PRAYER: Lord Jesus, when the ground seems to shift beneath our feet, turn our hearts and minds to the promises of Your Word, and hold us securely in Your hand. Amen.

This Daily Devotion was written by Dr. Carol Geisler. Take from Lutheran Hour Ministries, www.lhm.org

Students and Families we are praying for this week...

Each week in our faculty devotions and classroom devotions we lift up our LCS students and their families in prayer. During the week of August 28th we will be praying for Kailynn Darby, Addison Darlage, Clifford Davis, Jameson DiCenzo, Ashton Drake, Dannyala Drees, William Drees, Addison, Brady, and Ethan England, and Hannah Everhart.

Volleyball Event Information

As we begin to host volleyball events this season please be reminded of the following procedures we are following.

- Family units may sit together but using 6 feet of social distancing between each family unit. We are asking each volleyball family to limit their attendance to four (4) family members/friends at each home game (if a family has younger children that are able to sit on a parents lap that child would not count toward the limit of four (4)). We have asked visiting teams to limit their attendance to one family member per athlete. Spectators, athletes, and coaches will need to leave the gym following the completion of the first game unless an athlete is participating in the second game.
- Concessions will be available, but they will be limited to drinks (water, gatorade, and pop) and pre-packaged snacks (candy, chips, snack-mix, etc.)
- Our admission prices will be as follows:
 - Students (PK-12) - Free
 - Adults - \$5.00
- The building will open at 5:30 P.M. for participants and spectators.
- All home games will be live streamed on the school Facebook page.

Fall Mum Orders Due - Tuesday September 1st.

All mum orders along with payment must be turned into the school office no later than **Tuesday, September 1st.**

The delivery date for the flowers will be Wednesday, September 9th. Flowers may be picked up between 3:30-5:30pm on the day of delivery. The flowers should be picked up in front of the school. Please do not park in front of the school before 3:30, as we need to keep the street and parking area clear for bus dismissal.

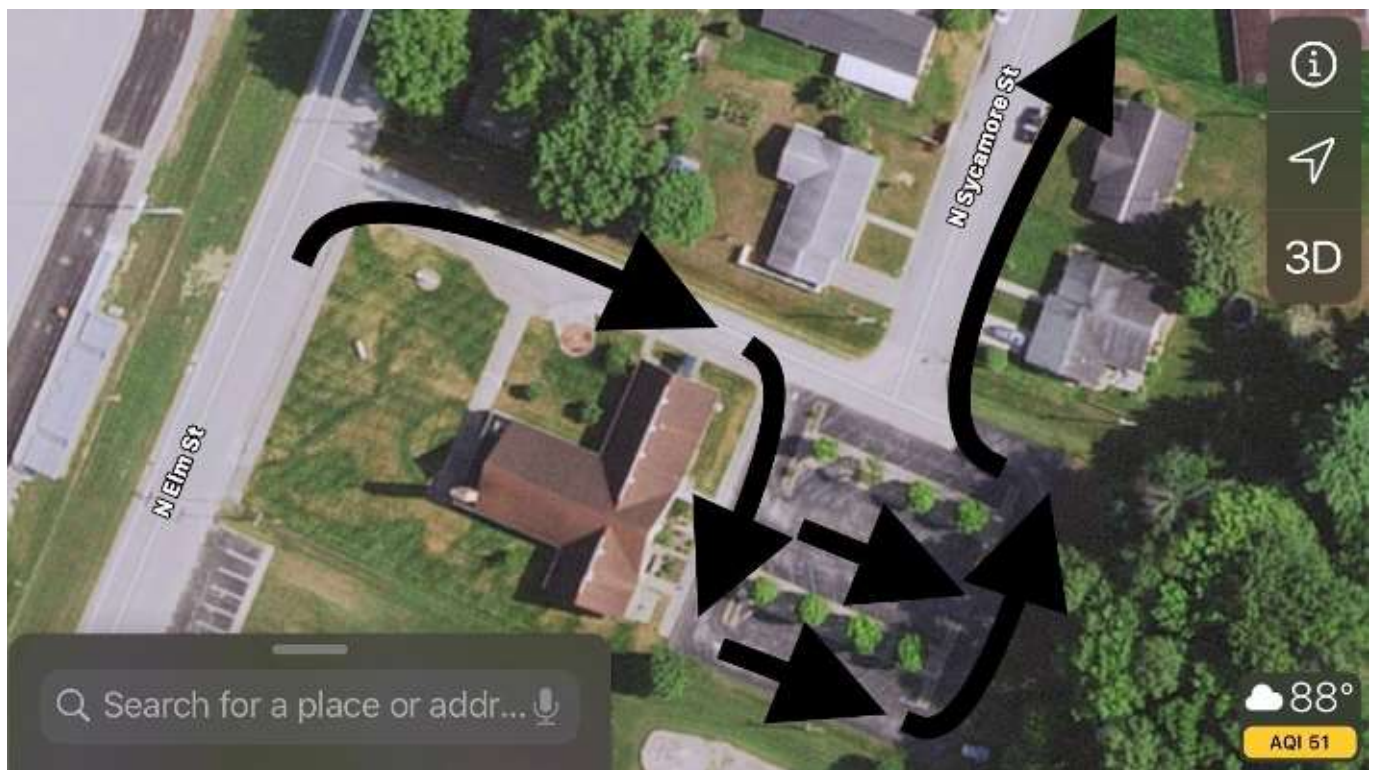
Please contact the school office for additional order forms or with any questions.

Drop-off and Pick-up Procedure Changes

Beginning Monday, August 24th we will be making a couple of changes to the drop-off and pick-up procedures. These changes are outlined below.

1. During arrival in the morning all students in grades K-8 will now enter through the main entrance of the school. During the first two weeks of school we have observed that students are not arriving in large groups and it will be feasible for us to take student temperatures and have them enter through a single entrance.
2. With fewer students riding the bus we have observed that the St. Peter's Church parking lot is more congested during afternoon dismissal. To help alleviate the congestion and create a better flow of traffic we are going to implement two pick-up locations for car riders. The Presbyterian Church has graciously allowed us to use their parking lot for afternoon pick-up. Families with last names starting with A-N will pick their children up in the Presbyterian Church parking lot and families with last names starting with O-Z will pick their children up in the St. Peter's Church parking lot. This change in after school pick-up does not apply to students in the AM preschool classes. A map showing the traffic flow for the Presbyterian Church parking lot can be seen below.

We appreciate your patience and cooperation as we implement these new procedures!



Updated COVID-19 Guidelines for Schools

This week the Indiana State Department of Health (ISDH) issued new guidance for schools regarding when a student or faculty/staff member can return to school due to COVID-19. This information has been posted to our school website (www.lcsaints.net) under the "Resources" section. In particular we want to draw parent's attention to the update on quarantine of siblings and household members. Lutheran Central School will be following this guidance moving forward. The ISDH documents state, "If a student, faculty, or staff member has symptoms of COVID-19 as described and tests positive or does **NOT** get tested for COVID-19, then siblings and household members should be considered close contacts and advised to quarantine. If the symptomatic person is diagnosed with another condition that explains the symptoms, or tests negative, then no quarantine for close contacts is necessary, but a provider's note with alternate diagnosis will be needed to return to school. **A symptomatic student, faculty, or staff member and anyone living in their household should quarantine while waiting for test results.**"

Upcoming Events

Sunday, August 30th

LC Sunday at St. Peter's, 8:00 & 10:30 A.M.

Monday, August 31st

Chapel, 8:30 A.M.

5th grade Volleyball vs. White Creek, 6:00 P.M.

6th grade Volleyball vs. White Creek, 7:00 P.M.

Tuesday, September 1st

Fall Mum Orders Due

7th grade Volleyball vs. Jennings Co., 6:00 P.M.

8th grade Volleyball vs. Jennings Co., 7:00 P.M.

Thursday, September 3rd

5th grade Volleyball @ St. Vincent, 6:00 P.M.

6th grade Volleyball @ St. Vincent, 7:00 P.M.

Friday, September 4th

1st Grade Review of Trimester 1

Monday, September 7th

Labor Day - No School



Volunteers for Upcoming Volleyball Games

Date	Concessions	Scoreboard	Clean-Up
Monday, August 31, 6pm 5th, 6th vs. White Creek	Andrea McKinley	Tyler Wessel	Wes and Brianna Spray
Tuesday, September 1, 6pm 7th, 8th vs. Jennings County	Mandy Hiday		Lance and Kayti Adams

Laura Jo's Cookie Fundraiser



**NOW THRU THE END OF
AUGUST! 15% OFF BACK
TO SCHOOL DOZENS!**



**COOKIES FOR ANY OCCASION!
EVERYTIME YOU ORDER SELECT
LUTHERAN CENTRAL
SAINTS
DURING CHECKOUT AND WE
RECEIVE 25% OF THE SALE!!**



WWW.LAURAJOSCOOKIESFORKIDS.COM

SCRIP Orders Due September 11th

SCRIP

What is SCRIP?

An opportunity to support Lutheran Central.

You purchase certificates/gift cards for businesses you already frequent and use in place of cash/check/credit. There is no additional cost to you! **SCRIP also makes a great gift!**

Hundreds of companies participate in SCRIP a few you may frequent include:



2 ways to purchase Scrip:

1. ShopWithScrip.com (Many more options available online!)
2. A physical order form.

How to pay:

1. Make checks payable to 'Lutheran Central' and return with order form.
2. Online payments may be set up by contacting the school office.

How do I order using the form?

Fill out the form on the back of the flier and return to the school office. Forms will be sent home before each due date.

How do you get started with online ordering?

Go to ShopWithScrip.com and click the 'Register' button at the top of the page. Next click 'Join a SCRIP Program'. Enter Lutheran Central's Enrollment Code: ~~Please Contact Office~~. Fill out all required information. For future visits you'll just need your username and password. You will then send your payment to the school office.

If you or the school happens to be distance learning when SCRIP is ready for delivery, you will be contacted to arrange the best way to deliver your order.

This Year's Due Dates (all on Fridays)

- Back to School Order: **September 11th**
- Black Friday/Christmas Order: **November 13th**
- Last Minute Christmas!: **December 11th**
- Confirmation/Spring Break Order: **March 12th**
- Graduation/Summer Break Order: **May 7th**

SCRIP Order Form

Family Order Form

Lutheran Central School

Fill out and return order form and check before the first Friday of each month. Orders will arrive the following week.

Name				Customer #			
Check #				Order Date			

Product	%	QTY	Total	Product	%	QTY	Total	Product	%	QTY	Total
Advance Auto Parts \$25.00	7%		\$	Circle K \$25.00	1.5%		\$	Old Navy \$25.00	14%		\$
Amazon.com \$100.00	3%		\$	Claire's \$10.00	9%		\$	Olive Garden @ \$25.00	9%		\$
Amazon.com \$25.00	3%		\$	Clarion Hotels \$50.00	4%		\$	Panera Bread \$10.00	9%		\$
American Eagle Outfitters \$25.00	10%		\$	Comfort Inn \$50.00	4%		\$	Panera Bread \$25.00	9%		\$
American Girl \$25.00	9%		\$	Cracker Barrel \$10.00	9%		\$	Pizza Hut (Not AK or IL) \$10.00	8%		\$
Applebee's \$25.00	8%		\$	Cracker Barrel \$25.00	9%		\$	Red Lobster @ \$25.00	9%		\$
Applebee's \$50.00	8%		\$	CVS Pharmacy \$25.00	8%		\$	Regal Theatres \$25.00	8%		\$
Arby's \$10.00	8%		\$	Dairy Queen \$10.00	3%		\$	Regal Theatres Premiera Movie Ticket \$10.00	10%		\$
AutoZone \$25.00	8%		\$	Dick's Sporting Goods \$25.00	8%		\$	Sam's Club \$25.00	2.5%		\$
Avis Car Rental \$50.00	8%		\$	Discover® Universal Gift Card \$50.00	1.25%		\$	Shell \$25.00	2%		\$
Babies"R"Us \$20.00	3%		\$	Disney \$25.00	2%		\$	Shell \$50.00	2%		\$
Barnes & Noble \$10.00	9%		\$	Exxon \$50.00	1%		\$	Shutterfly \$25.00	9%		\$
Barnes & Noble \$25.00	9%		\$	GameStop \$25.00	3%		\$	Speedway \$25.00	4%		\$
Bath & Body Works \$10.00	13%		\$	Gap \$25.00	14%		\$	Staples \$25.00	5%		\$
Bath & Body Works \$25.00	13%		\$	Goody's \$25.00	8%		\$	Starbucks \$10.00	7%		\$
Bed Bath & Beyond \$25.00	7%		\$	Groupon.com \$25.00	7%		\$	Starbucks \$25.00	7%		\$
Best Buy® \$25.00	4%		\$	Haltmark \$25.00	4%		\$	Steak 'n Shake \$10.00	8%		\$
Bob Evans \$10.00	10%		\$	Hotels.com \$100.00	6%		\$	SUBWAY® Restaurants \$10.00	6%		\$
BP \$50.00	1.5%		\$	iTunes® \$15.00	5%		\$	SUBWAY® Restaurants \$50.00	6%		\$
Buckle \$25.00	8%		\$	iTunes® \$25.00	5%		\$	T.J. Maxx \$25.00	7%		\$
Buffalo Wild Wings \$10.00	8%		\$	Jcpenney \$25.00	5%		\$	Taco Bell \$10.00	5%		\$
Buffalo Wild Wings \$25.00	8%		\$	Jo-Ann Fabric and Craft Stores \$25.00	6%		\$	Tanger Outlets \$25.00	8%		\$
Build-A-Bear Workshop \$25.00	8%		\$	Kmart \$25.00	4%		\$	Target \$25.00	2.5%		\$
Burger King \$10.00	4%		\$	Kohl's \$25.00	4%		\$	Target \$50.00	2.5%		\$
BuybuyBABY \$25.00	7%		\$	LongHorn Steakhouse @ \$25.00	9%		\$	Texas Roadhouse \$25.00	8%		\$
Cabela's \$25.00	11%		\$	Lowe's \$20.00	4%		\$	The Home Depot \$100.00	4%		\$
Carson's \$25.00	8%		\$	Lowe's \$25.00	4%		\$	The Home Depot \$25.00	4%		\$
Carter's \$25.00	10%		\$	Marathon \$25.00	3%		\$	Toys"R"Us \$20.00	3%		\$
Chesapeake Factory \$25.00	5%		\$	Maurices \$20.00	7%		\$	Visa® Five Back™ Gift Card \$50.00	1.25%		\$
Children's Place \$25.00	12%		\$	Menards \$25.00	3%		\$	Walgreens \$25.00	6%		\$
Chili's Grill & Bar \$25.00	11%		\$	Nike \$25.00	12%		\$	Walmart \$100.00	2.5%		\$
Chili's Grill & Bar \$50.00	11%		\$	NOOK by Barnes & Noble \$10.00	9%		\$	Walmart \$25.00	2.5%		\$
Chuck E. Cheese \$10.00	8%		\$	NOOK by Barnes & Noble \$25.00	9%		\$	Wendy's \$10.00	4%		\$
				O'Charley's \$25.00	13%		\$				

Make Checks Payable To: *Lutheran Central School*

Total Due All Columns:

\$